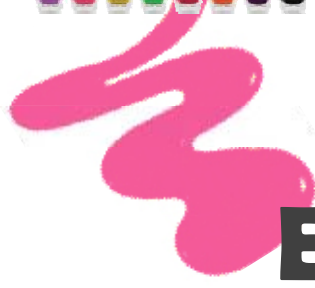




Enfren
LED GEL Nail Dryer ES-50



ES-50 Nail Watch Dryer



The Excellent
Company Brand
of Seoul



enfren
Fresh Life Partner



Main Features



[Enfren UV GEL Nail Polish Dryer Feature & Advantages]

- ◆ Strong Power, Quick drying (hardening) Ability
- ◆ Environment-friendly UV LED safe to the skin and proved was applied
- ◆ Simple & Easy control – Touch Sensor Switch
- ◆ C/S cost saving owing to stable quality
- ◆ Compact & Slim Design



Strong Power,

Quick drying (hardening) Ability

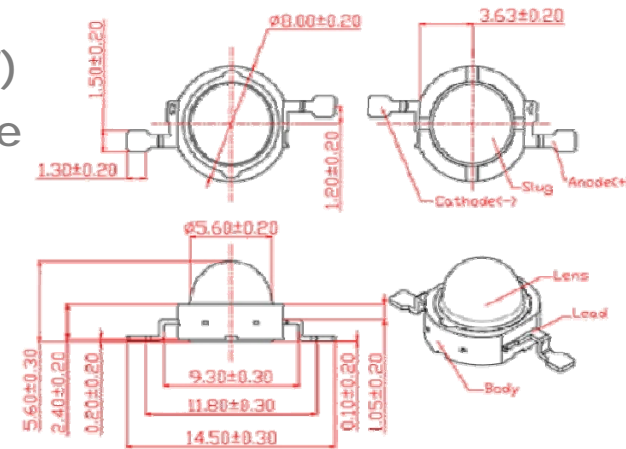
◆ Strong POWER

As a 1W class SMD Type UV Power LED is built-in, drying speed is very quick, and time saving and work efficiency improved

◆ Quick drying (hardening) ability: GEL drying within 30~45 seconds

- ES-50 (3 pieces of 1W POWER LED, 4W)
- : Drying for both the Base and manicure is possible within 30, 45 seconds respectively .
- Base & Top Gel : 30 sec
- Color Gel : 45 sec

*Existing product: Mostly less than 4W



(SMD Type Power LED)

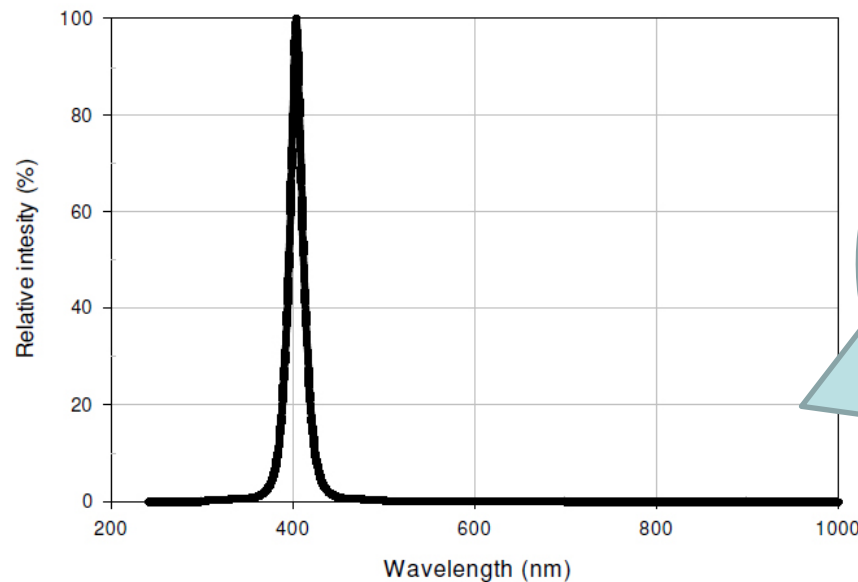


Environment-friendly UV LED

safe to the skin and proved was applied

◆ Environment-friendly UV LED safe to the skin and proved was applied

- Enfren GEL Dryer applied the SMD type UV Power LED of 405nm frequency
- : Since the UV-A (320-400nm), UV-B (290-320nm) emitted from the existing UV fluorescent are not discharged, **it is safe to the skin**



As an UV LED being supplied in large quantities to OP* Corporation USA, it is the product whose safety, reliability is already proved



UV POWE LED Remarkable Advantages



UV POWE LED Remarkable Advantages

1. **Eco-friendly LED lighting**

: LED is eco-friendly as it does not use heavy metal such as mercury etc unlike the fluorescent

2. Drying is fast and strong as a light efficiency is high.

: Light efficiency is 3~5 times higher compared to the UV fluorescent

3. **Many long hours use is possible as its life span is long**

: Since the LED life span is about 50,000 hours,
it is possible to use 6~8 times as long as the UV fluorescent

4. Irradiating range is wider with the light dispersion angle against the existing lamp type LED.

: The lamp type is about 60°, but the SMD type is over 2 times wider with maximum 144°

5. Inferiority is few and safety is high by the use of small number of LEDs.

As it use only minimum 1/5~maximum 1/10 level compared to the lamp type, inferiority is low and cost loss caused by replacement is small



Simple & Easy control – Touch Sensor Switch



◆ Touch sensor Switch

- It is normally operating even if it is stained with manicure, foreign substance etc or contaminated
- **As a Timer is built-in**, it automatically close after operating

Touch Switch



◆ C/S cost saving owing to stable quality

- Use of the exclusive LED Driver IC
: Product's safety improvement through static current supply



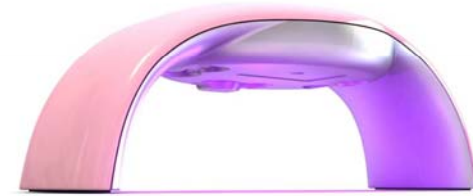
Compact & Slim Design



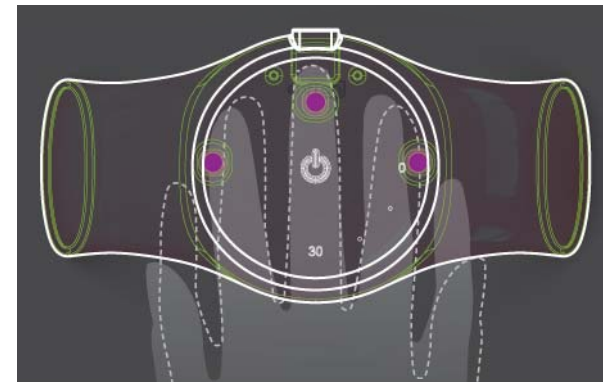
◆ Compact & Slim Design

- Ultra Size and Ultra Light

: Easily carry any where.



(LED Placement Drawing)





Color Variation





Product Size





Specification



| Item # | SPEC & Details |
|------------------------------|--|
| UV LED | SMD Type Power LED (1W) : 3pcs |
| Electric Consumption | Max 4W |
| The source of electric power | AC-DC Switching Adaptor , (UL,PSE,CE etc) (Input:AC100~240V 50/60Hz, Output: DC 12V / 0.6A) |
| Size & Weight | 150 * 77 * 54mm(Height) / Weight 70g |
| Package | UV GEL DRYER, User Manual , Adaptor |
| C/T. loading | 24PCS/CT. |



CE Certification

Declaration Of Conformity

EMC DIRECTIVE 2004/108/EC

For

Product: UV Gel Nail Polish Dryer

"Model Name: ES-50"

AUTHORIZED

Enfren Co., Ltd

103-1210, Bucheon Techno Park Seangyong 3, 36-1 Samjeong-Dong, Ojeong-Gu,
Bucheon-City, Gyeonggi-Do, Korea

August 14, 2013

SUMMARY

The equipment complies with the standards:

- EN 55014-1:2006 +A2:2011
- EN 61000-3-2:2006 +A2:2009
- EN 61000-3-3:2008
- EN 55014-2:1997 +A2:2008 (Category II)

(signature)

This is only valid in connection with Test Report: E1.FWD-114

The report should not be reproduced in full or partly without written approval of sarsunberk Co., Ltd

Head Office & EMC Testing Dept: #527/508, Dongyoung Central Tower, 847-2 Kwanjang-Dong, Gapsin-Si, Kyunggi-Do, Korea 415-050

Tel: (82)31-393-3394 Fax: (82)31-391-9392



Manual (FRONT)



It's nail time!



Enfren

LED Gel Dryer

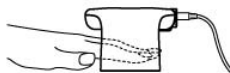
nail **watch**
ES-50

Make sure to read this user manual carefully before using the product.
After reading the user manual, keep it in a place where user can see at any time.
There includes the warranty at the back of the user manual.

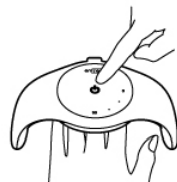
How to use



1 Connect the power adaptor to the power terminal at the back of the product, and then plug in.



2 Please put hand or foot under nail dryer.



3 Touch the power button to start.



4 Built-in timer lets it turn off automatically after 45 seconds. (Nail dryer does not turn-off during using)

Cautions

- * Do not let the fingernail contact the lamp after applying gel. If the lamp is stained with the gel, it may malfunction.
- * Be careful not to let user's eyes expose themselves to the light of the LED lamp for a long time.
- * Avoid direct sunlight or do not place near a heater. It may cause change in shape and change in color of the product.
- * Do not disassemble the product discretionally. We are not responsible for discretionary disassembly. Throw it away in the designated place when the product is disposed of to prevent it from being misused.
- * Do not use at a humid place or touch with the wet hands. (It may cause an electric shock.)
- * Wipe with a dry towel or towel with a detergent when cleaning the body. Never wipe with chemicals such as benzene or thinner, and so on.
- * Do not use at a place where intense vibration occurs.
- * Do not drop or make a strong impact. It may cause trouble.
- * Do not forcibly pull the power cord.
- * Get after-sales service from our service center when the product doesn't work properly.



The Excellent Company Brand of Seoul





Manual (BACK)



Product Warranty

Compensation for customer's damage

1. If any defect occurs while using the product, customer can get free after-sales service for one year from the date of purchase.
2. For the following defects, customer must get after-sales service with a charge even within the warranty period.
 - Any defect caused by user's mistake or negligent handling.
 - Any defect caused by natural disasters (fire, salt damage, gas, earthquake, storm and flood damage, falling of a thunderbolt)
 - Any defect caused by other people's repair or alteration other than our repairs.
 - Any defect caused by non-fulfillment of cautions specified in the user manual.
3. Be sure to present the warranty when repair is needed.
4. Keep it carefully as the warranty is not reissued.
5. Parts for repair of this product shall be kept in stock for 3 years.

*Make sure to fill in the blanks to get free after-sales service for one year after purchase.

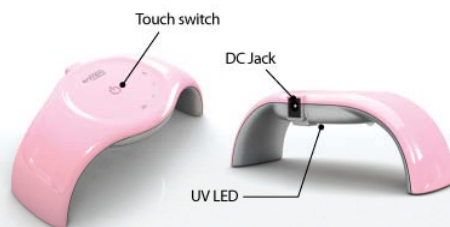
| | | | | |
|------------------|----------------------|-------|-----|-----------------|
| Product Name | Enfren LED Gel Dryer | | | Warranty period |
| Model No. | ES-50 | | | One year |
| Date of Purchase | year | month | day | |
| Warranty Period | year | month | day | until |



Contact Us

Enfren Co.,Ltd. www.enfren.com
 103-1210, Bucheon Techno Park Ssangyong 3 Cha Apt,
 397, Seokcheon-ro, Ojeong-gu, Bucheon-si, Gyeonggi-do, Korea
 Tel: 82-70-8255-7051 E-mail: seoul@enfren.com

Name of each part



Specifications

| | | | |
|-------------------|-------------|-----------------|---------------|
| Model No. | ES-50 | Accessory | Power adaptor |
| Input | AC100 -240V | Dimensions | 155x77x54mm |
| Output | DC12V | Wt | 70g |
| Power consumption | 4W | Place of origin | Korea |

Features

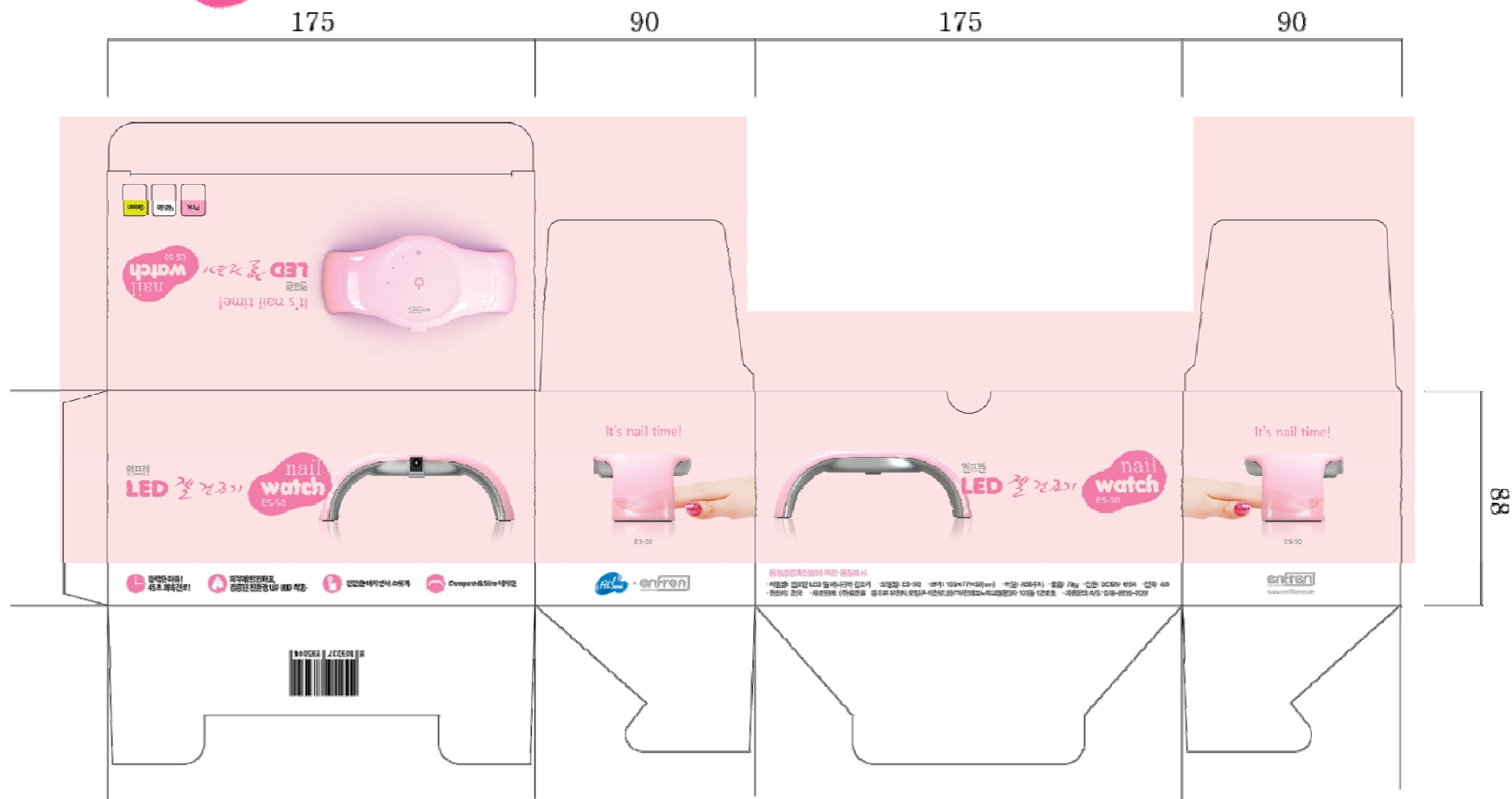
- Strong power! 45-second quick drying ability**
Built-in 1W-class SMD type UV power LED features quick drying (hardening) speed, time-saving, and improved work efficiency.
- Application of skin-safe, proven eco-friendly UV LED**
Skin-safe Power LED of 405nm frequency is applied. UV-A and UV-B from the existing UV fluorescent are not discharged, which is safe to the skin.
- Maintenance cost reduction owing to stable quality**
Highly enhanced reliability compared with the existing ordinary LED
- Easy touch sensor switch movement method**
It is Ok if the hand is naturally put into the lower part of the product and is touched once.
- Compact & slim design**
Ultra-small size and ultra-light design! Fit in handbag!



Gift Box



Enfren
LED GEL Nail Dryer ES-50



Hi Seoul
The Excellent Company Brand of Seoul

kotra
Part of Excellence

enfren
Fresh Life Partner



Carton Box



24 pcs for 1 carton

552

402

