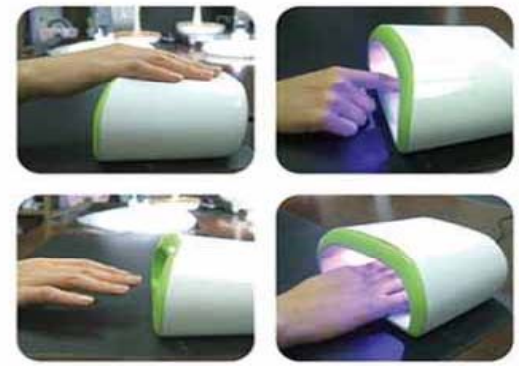
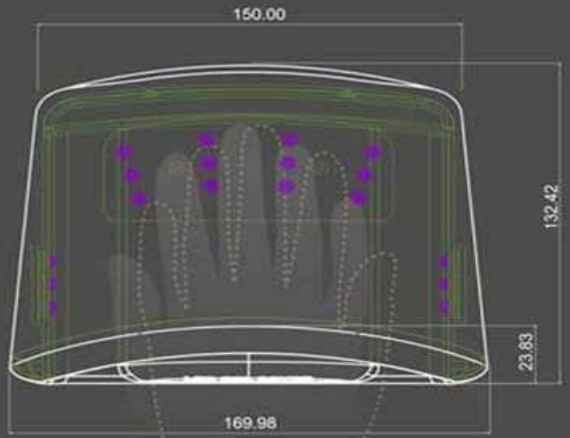


# Enfren UV GEL DRYER ES-100



[Enfren UV GEL Nail Polish Dryer Feature & Advantages]

- ◆ Strong Power, Quick drying (hardening) Ability
- ◆ Environment-friendly UV LED safe to the skin and proved was applied
- ◆ Easy operating System  
(automatic recognition – movement – completion)
- ◆ C/S cost saving owing to stable quality
- ◆ User-oriented ergonomics design embodied

Strong Power,

Quick drying (hardening) Ability



### ◆ Strong POWER

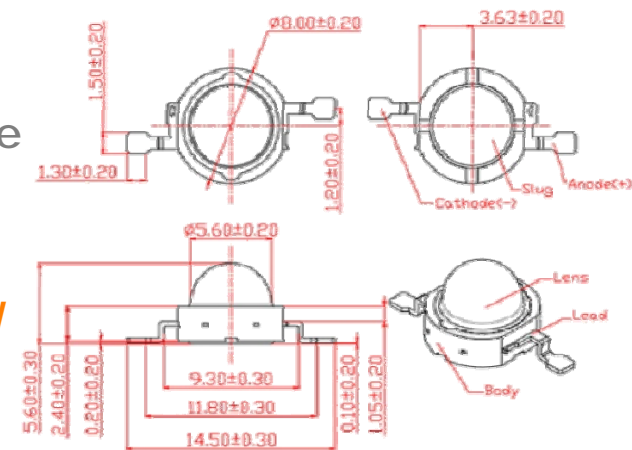
As a 1W class SMD Type UV Power LED is built-in, drying speed is very quick, and time saving and work efficiency improved

### ◆ Quick drying (hardening) ability: GEL drying within 20~30 seconds

- ES-100 (6 pieces of 1W POWER LED, 6W)

: Drying for both the Base and manicure is possible within 20~30seconds respectively

\*Existing product: Mostly less than 3~4W



(SMD Type Power LED)



The Excellent  
Company Brand  
of Seoul



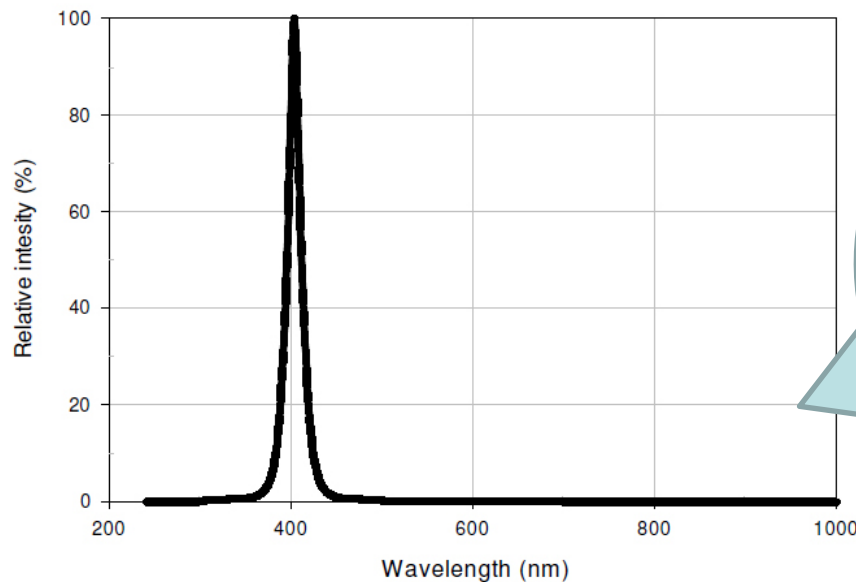
# Environment-friendly UV LED



safe to the skin and proved was applied

## ◆ Environment-friendly UV LED safe to the skin and proved was applied

- Enfren GEL Dryer applied the SMD type UV Power LED of 405nm frequency
- : Since the UV-A (320-400nm), UV-B (290-320nm) emitted from the existing UV fluorescent are not discharged, **it is safe to the skin**



As an UV LED being supplied in large quantities to OP\* Corporation USA, it is the product whose safety, reliability is already proved



The Excellent Company Brand of Seoul



## \*\*UV POWE LED Remarkable Advantages\*\*

### 1. Eco-friendly LED lighting

: LED is eco-friendly as it does not use heavy metal such as mercury etc unlike the fluorescent

### 2. Drying is fast and strong as a light efficiency is high.

: Light efficiency is 3~5 times higher compared to the UV fluorescent

### 3. Many long hours use is possible as its life span is long

: Since the LED life span is about 50,000 hours, it is possible to use 6~8 times as long as the UV fluorescent

### 4. Irradiating range is wider with the light dispersion angle against the existing lamp type LED.

: The lamp type is about 60°, but the SMD type is over 2 times wider with maximum 144°

### 5. Inferiority is few and safety is high by the use of small number of LEDs.

As it use only minimum 1/5~maximum 1/10 level compared to the lamp type, inferiority is low and cost loss caused by replacement is small

### ◆ Touch Sensor automatic movement method adopted

A system that once the hand is naturally put at the product's lower part, it automatically recognize and move was embodied  
(automatic recognition - movement - completion)

- As it equipped with a static capacity method touch sensor that moves after sensing the electric current running in a man's body, it is possible to use without wrong functioning from static electricity or outside influence irrespective of day & night

- It is normally operating even if it is stained with manicure, foreign substance etc or contaminated
- As a Timer is built-in, it automatically close after operating





C/S cost saving owing to stable quality



## ◆ C/S cost saving owing to stable quality

- Aluminum material LED PCB applied

: LED life span improvement and reliability improvement on account of the aluminum PCB use of superior heat protection structure

- Use of the exclusive LED Driver IC  
: Product's safety improvement through static current supply

(Aluminum LED PCB)



The Excellent  
Company Brand  
of Seoul



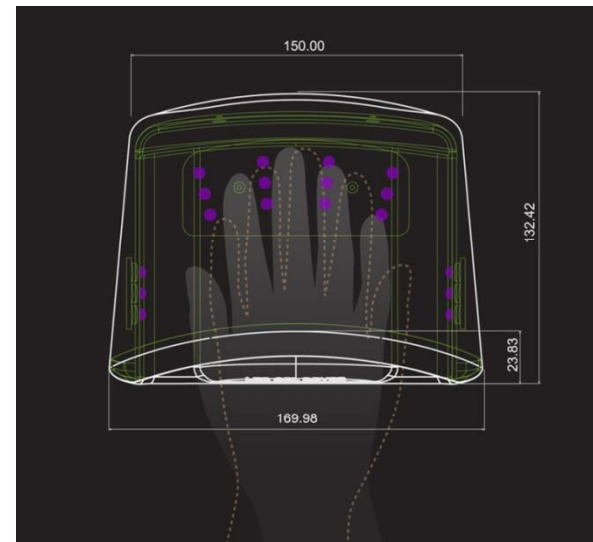
◆ User-oriented ergonomics design embodied

- LED position is adjusted different to each other considering the user's convenience, position and angle of the thumb

: thumb LED is arranged at a right angle (90°) to left & right respectively

- Stand-by/movement: Indication LED is arranged on the product's upper part

(LED Placement Drawing)





# Compact, Unique Design

UV GEL DRYER



The Excellent  
Company Brand  
of Seoul





### Compensation for customer's damage

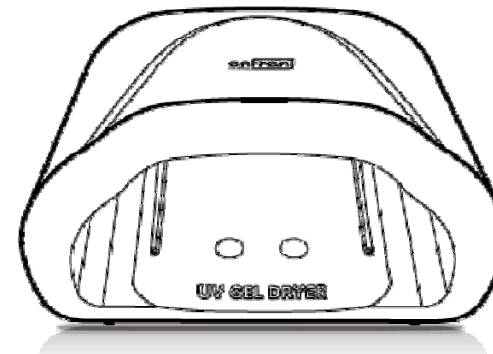
1. If any defect occurs while using the product, customer can get free after-sales service for one year from the date of purchase.
2. For the following defects, customer must get after-sales service with a charge even within the warranty period.
  - Any defect caused by user's mistake or negligent handling.
  - Any defect caused by natural disasters (fire, salt damage, gas, earthquake, storm and flood damage, falling of a thunderbolt)
  - Any defect caused by other people's repair or alteration other than our repairmen.
  - Any defect caused by non-fulfillment of cautions specified in the user manual.
3. Be sure to present the warranty when repair is needed.
4. Keep it carefully as the warranty is not reusable.
5. Parts for repair of this product shall be kept in stock for 3 years.

\*Make sure to fill in the blanks to get free after-sales service for one year after purchase.

Product Name	<b>Enfren LED Gel Dryer</b>			Warranty period
Model No.	<b>ES-100</b>			<b>One year</b>
Date of Purchase	year	month	day	
Warranty Period	year	month	day	until

## Enfren LED Gel Nail Polish Dryer ES-100

### User Manual



Make sure to read this user manual carefully before using the product. After reading the user manual, keep it in a place where user can see at any time. There includes the warranty at the back of the user manual.

### Contact Us



**Enfren Co., Ltd.** [www.enfren.com](http://www.enfren.com)  
 103-1210, Bucheon Techno Park Seangyong 3 Cha Apt, 397, Seokcheon-ro, Gyeong-gu,  
 Bucheon-si, Gyeonggi-do, Korea  
 Tel: 82-70-8255-7051 E-mail: seoul@enfren.com



The Excellent  
Company Brand  
of Seoul



## Features

### 1 Strong power! 30-second quick drying ability

Built-in 1W-class SMD type UV power LED features quick drying (hardening) speed, time-saving, and improved work efficiency (5 pieces of 1W Power LED, 6W). Drying is available within 10~20 seconds for the base and within 20~30 seconds for nail polish.

### 2 Application of skin-safe, proven eco-friendly UV LED

Skin-safe Power LED of 405nm frequency is applied. UVA and UV-B from the existing UV fluorescent are not discharged, which is safe to the skin.

### 3 Easy operating system (recognition - movement - Off): Patent application

Easy operating system (recognition - movement - Off): Patent application

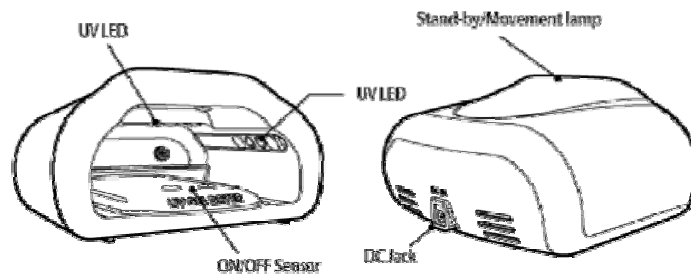
### 4 Maintenance cost reduction owing to stable quality

- LED life span improvement and reliability improvement arising from the use of aluminum PCB with superior heat protection structure
- Use of the exclusive LED driver IC: Enhanced stability of the product through the supply of static current.

### 5 Ergonomical design considering the position of the thumb

Comfortable posture can be maintained like the hand is placed on a mouse, and LED is arranged at an angle of 45 degrees to the left and right respectively considering the position of the thumb, allowing for nail polish evenly on the five fingers at the same time. (Creation of finger deviation prevention line)

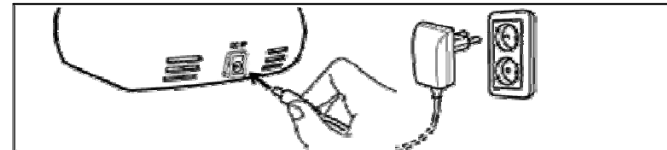
## Name of each part / Specifications



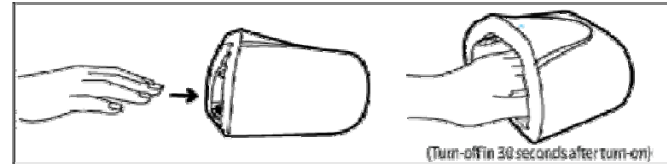
Model No.	ES-100	Power consumption	6W
Input	AC100-240V	Accessory	Power adaptor
Output	DC12V		

## How to Use

- 1 Connect the power adaptor to the power terminal at the back of the product, and then plug in. The movement lamp turns red on the upper part if the power turns on.



- 2 If the hand (foot) with the exclusive UV LED gel is put into the lower part of the body, the lamp automatically turns on. The movement lamp turns blue, indicating that it is working. Built-in timer lets it turn off automatically after 30 seconds.



- 3 Be careful of the position of the thumb: The thumb should be placed above the guideline inside the body.



## ⚠ Cautions

- \* Do not let the fingernail contact the lamp after applying gel. If the lamp is stained with the gel, it may malfunction.
- \* Be careful not to let user's eyes expose themselves to the light of the LED lamp for a long time.
- \* Avoid direct sunlight or do not place near a heater. It may cause change in shape and change in color of the product.
- \* Do not disassemble the product discretionally. We are not responsible for discretionary disassembly. Throw it away in the designated place when the product is disposed of to prevent it from being misused.
- \* Do not use at a humid place or touch with the wet hands. (It may cause an electric shock.)
- \* Wipe with a dry towel or towel with a detergent when cleaning the body. Never wipe with chemicals such as benzene or thinner, and so on.
- \* Do not use at a place where intense vibration occurs.
- \* Do not drop or make a strong impact. It may cause trouble.
- \* Do not forcibly pull the power cord.
- \* Get after-sales service from our service center when the product doesn't work properly.

# Specification



Item #	ES-100
UV LED	SMD TYPE 1W UV Power LED 6pcs
Electric Consumption	Max 6W
LED Indicator	2 color LED (Blue/red, lamp Type)
The source of electric power	AC-DC Switching Adaptor , UL listed (Input:AC100~240V 50/60Hz, Output: DC 15V / 1A)
Product Size/Weight	170 * 133 * 78mm(Height) / Weight 0.29kg
Package	UV GEL DRYER, User Manual , Adaptor
C/T. loading	12PCS/CT. , 5,000PCS/ 20FT



# CE Certification



**CE**

**EC Declaration of Conformity**  
According to EC EMC Directive 2004/108/EC

**Applicant's Name :** Enfren Co., Ltd  
**Applicant's Address :** 103-1210, Bucheon Techno Park Ssangyong 3, 36-1  
Sanjeong-Dong, Ojeong-Gu, Bucheon-City, Gyeonggi-Do,  
Korea

**Manufacturer's Name :** Enfren Co., Ltd  
**Manufacturer's Address :** 103-1210, Bucheon Techno Park Ssangyong 3, 36-1  
Sanjeong-Dong, Ojeong-Gu, Bucheon-City, Gyeonggi-Do,  
Korea

*Declares that the product:*

**Product Name :** ES-100  
**Base Model :** ES-200  
**Variant Model :** -

To which this declaration relates is in conformity with the following standard(s) or other normative document(s):

EN 55014-1:2006/A2:2011	Electromagnetic compatibility Requirements for household appliances, electric tools and similar apparatus Part 1: Emission
EN 55014-2:1997/A2:2006	Electromagnetic compatibility Requirements for household appliances, electric tools and similar apparatus Part 2: Immunity

following the provisions of Directive(s):

2004/108/EC	Council Directive on the approximation of laws of the Member States relating to electromagnetic compatibility (OJ L31/23.5.89), amended by Directives, 92/31/EEC (OJ L126 12.5.92) and 93/68/EEC(OJ L220 30.8.93)
-------------	---

KOREA / 02. 25. 2013 \_\_\_\_\_ / President  
(Place and date of issue) (name and signature or equivalent making of authorized person)  
European Contact (for regulatory topics only):

**CE**

**EC Declaration of Conformity**  
according to EC Low Voltage Directive 2006/95/EC

**Manufacturer's Name:** Enfren Co., Ltd.  
**Manufacturer's Address:** 103-1210, Bucheon Techno Park Ssangyong 3,  
36-1 Sanjeong-Dong, Ojeong-Gu, Bucheon-City,  
Gyeonggi-Do, Korea

*Declares that the product:*

**Product Name:** UV Gel Nail Polish Dryer  
**Model Number:** ES-100  
**Variant Model:** ES-200

To which this declaration relates is in conformity with the following standard(s) or other normative document(s):

EN 60335-1:2002 +A1:2004+A11:2004 +A12:2006+A2:2006 +A13:2008+A14:2010 +A15:2011	Household and similar electrical appliances - Safety Part 1: General requirements
EN 60335-2-59:2003 /A1:2006	Household and similar electrical appliances - Safety Part 2-59: Particular requirements for insect killers
EN 62233:2008	Household and similar electrical appliances - Electromagnetic fields - Methods for evaluation and measurement

following the provisions of Directive(s):

2004/108/EC	Council Directive on the approximation of laws of the Member States relating to electromagnetic compatibility (OJ L31/23.5.89), amended by Directives, 92/31/EEC (OJ L126 12.5.92) and 93/68/EEC(OJ L220 30.8.93)
2006/95/EC	Directive on the laws of Member States relating to electrical equipment designed for use with certain voltage limits (OJ L374 27.12.2006)

Korea / 03. 14. 2013 \_\_\_\_\_ / President  
(Place and date of issue) (name and signature or equivalent making of authorized person)  
European Contact (for regulatory topics only):

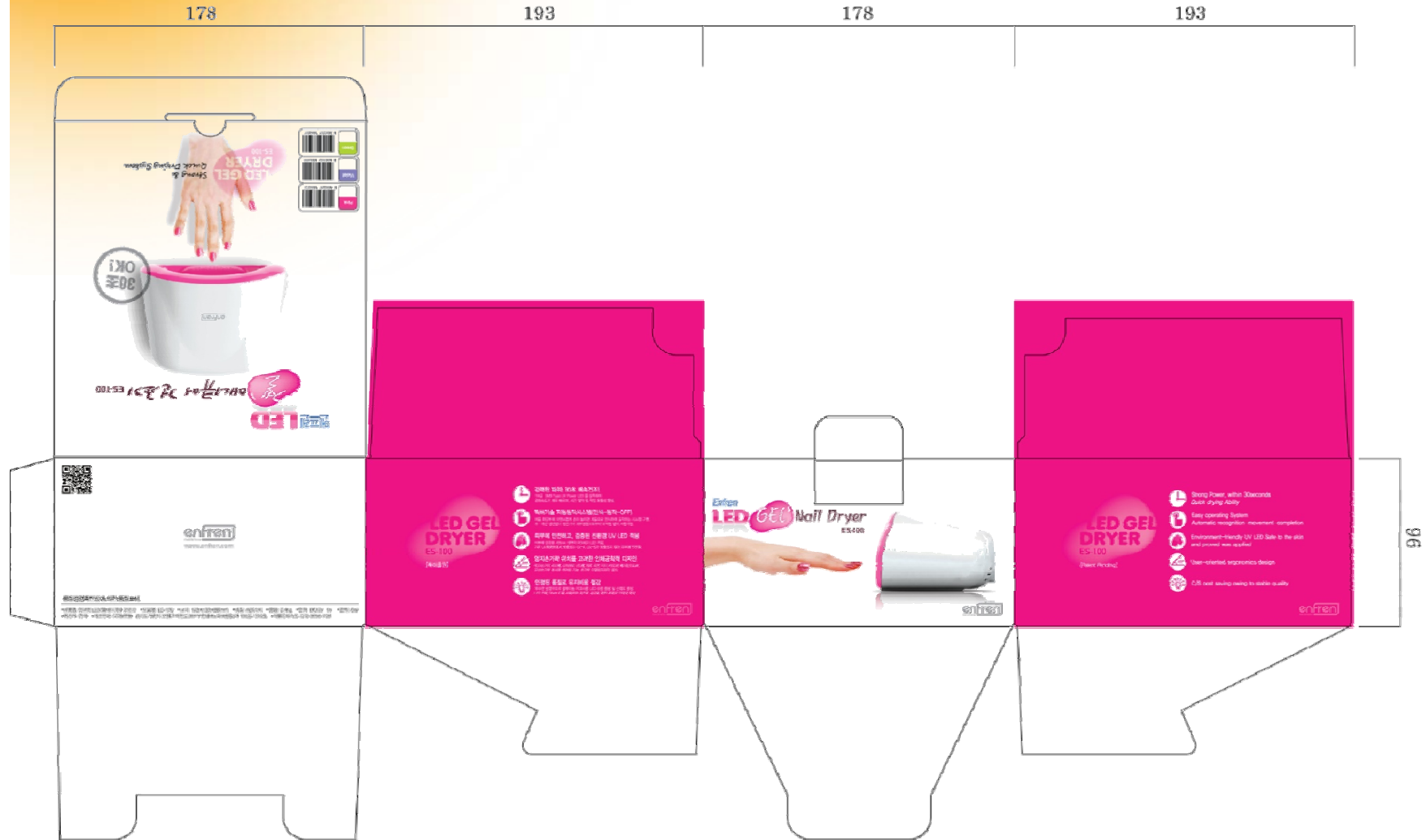


The Excellent  
Company Brand  
of Seoul





# Gift Box Packing



The Excellent Company Brand of Seoul



# Carton Box Packing



12pcs for 1 carton

