

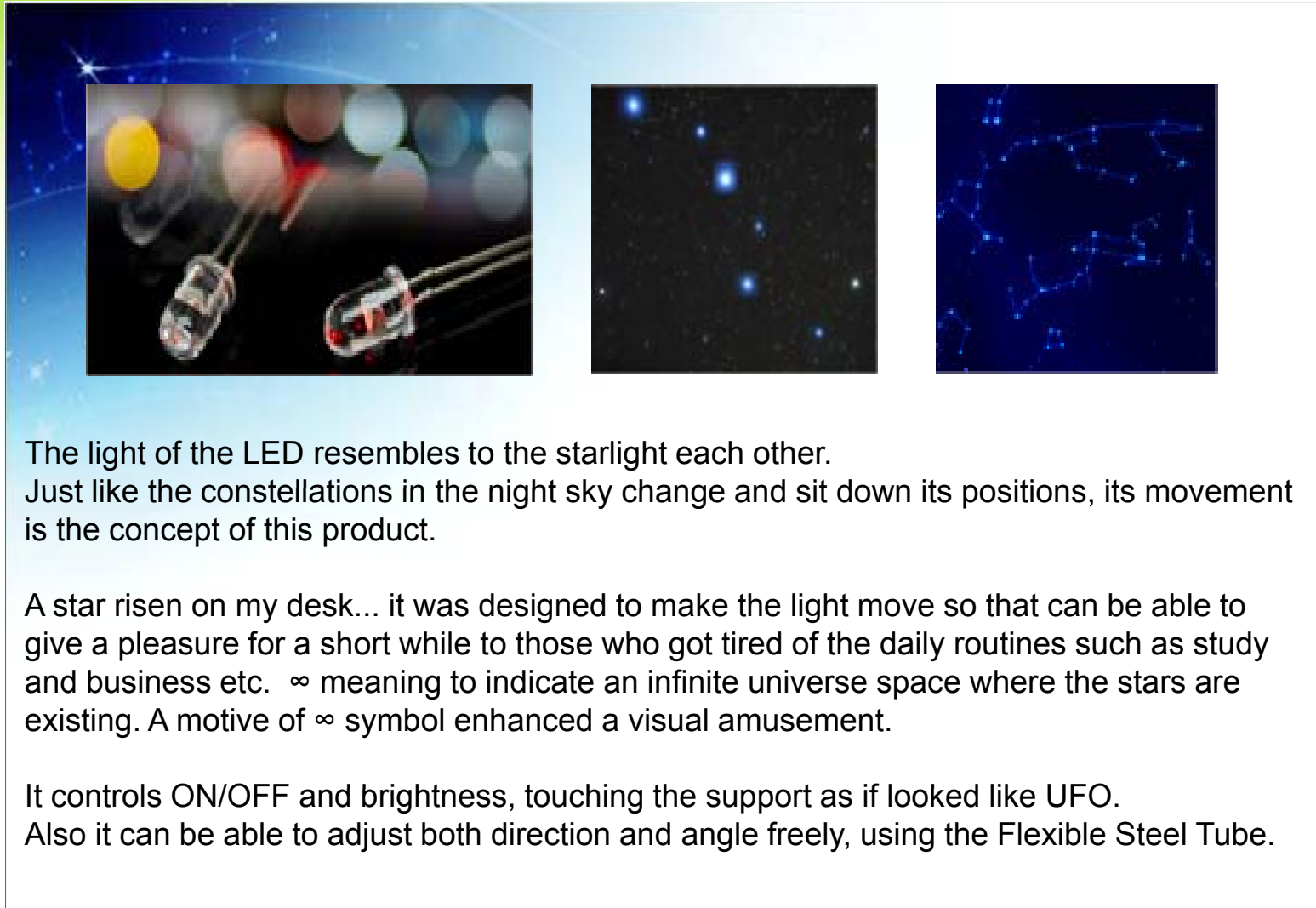


“Free Style”

LED LTK-1500K
desk lamp

It was designed to make the light move so that can be able to give a pleasure for a short while to those who got tired of the daily routines such as study and business etc,

Product Concept



The light of the LED resembles to the starlight each other. Just like the constellations in the night sky change and sit down its positions, its movement is the concept of this product.

A star risen on my desk... it was designed to make the light move so that can be able to give a pleasure for a short while to those who got tired of the daily routines such as study and business etc. ∞ meaning to indicate an infinite universe space where the stars are existing. A motive of ∞ symbol enhanced a visual amusement.

It controls ON/OFF and brightness, touching the support as if looked like UFO. Also it can be able to adjust both direction and angle freely, using the Flexible Steel Tube.



[Strong Points of LTK-1500 LED]

- Environment-friendly / **Eyesight protection** product
- Minimized electricity consumption
/ Increased product life span
- Easy transformation/bound for LED Module
- Sensitive Lighting
- **Dimming Function/Touch Sensor**
- **Flexible Spring Tube**
- Made in Korea

Environment Friendly Eye Protection



*** A pollution-free environment-friendly luminous source product**

- Based on functions, not included mercury which is used for fluorescent product, and longer use time to help reduce environmental wastes.

*** Using DC electric power, protect your eye sight.**

- No Lights Blinking



The Excellent
Company Brand
of Seoul



Power Consumption & Life Span



***6 times cheaper electric cost than the fluorescent bulb**

***6 times longer life span than fluorescent bulb(Semi-permanent)**

	Incandescent Bulb	Fluorescent	Fluorescent of the Bulb Type	LED
Brightness	General Bright	Normal Bright	Very Bright	Very Bright
Consumption (1,000LM/1Hour) <small>*Based on Korean Rate</small>	100W (4 Cent)	40W (1 Cent)	20W (0.5 Cent)	Below 5W (0.1 Cent)
Life Span (5Hours a Day)	1,000 Hours	4,000~5,000 Hours	Below 5,000 Hours	More than 30,000 Hours



The Excellent Company Brand of Seoul



enfren
Fresh Life Partner

Illumination Distribution Chart

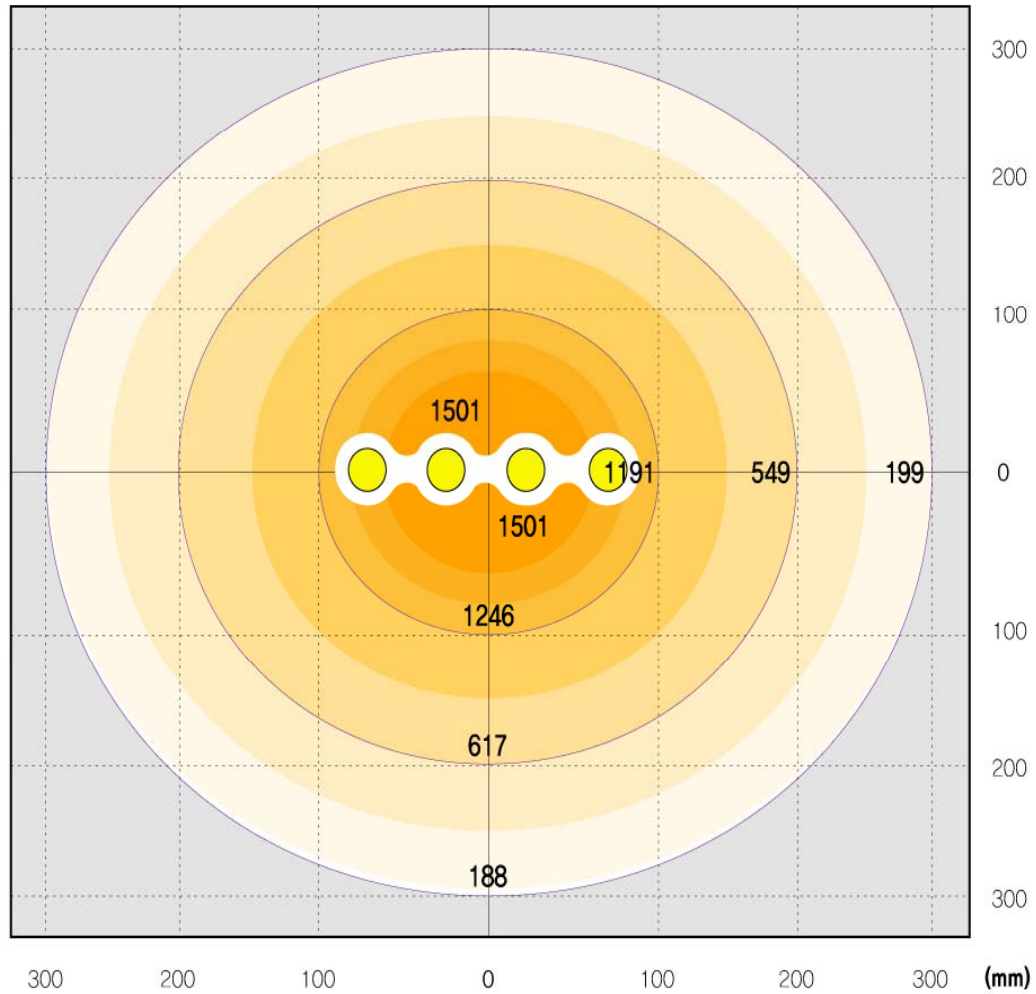


* LTK-1500 Illumination Distribution Chart

측정높이: 35cm

* Inside Digit
: Brightness / Lux

* Outside Digit
: Distance / mm



The Excellent
Company Brand
of Seoul



Illumination Distribution Chart

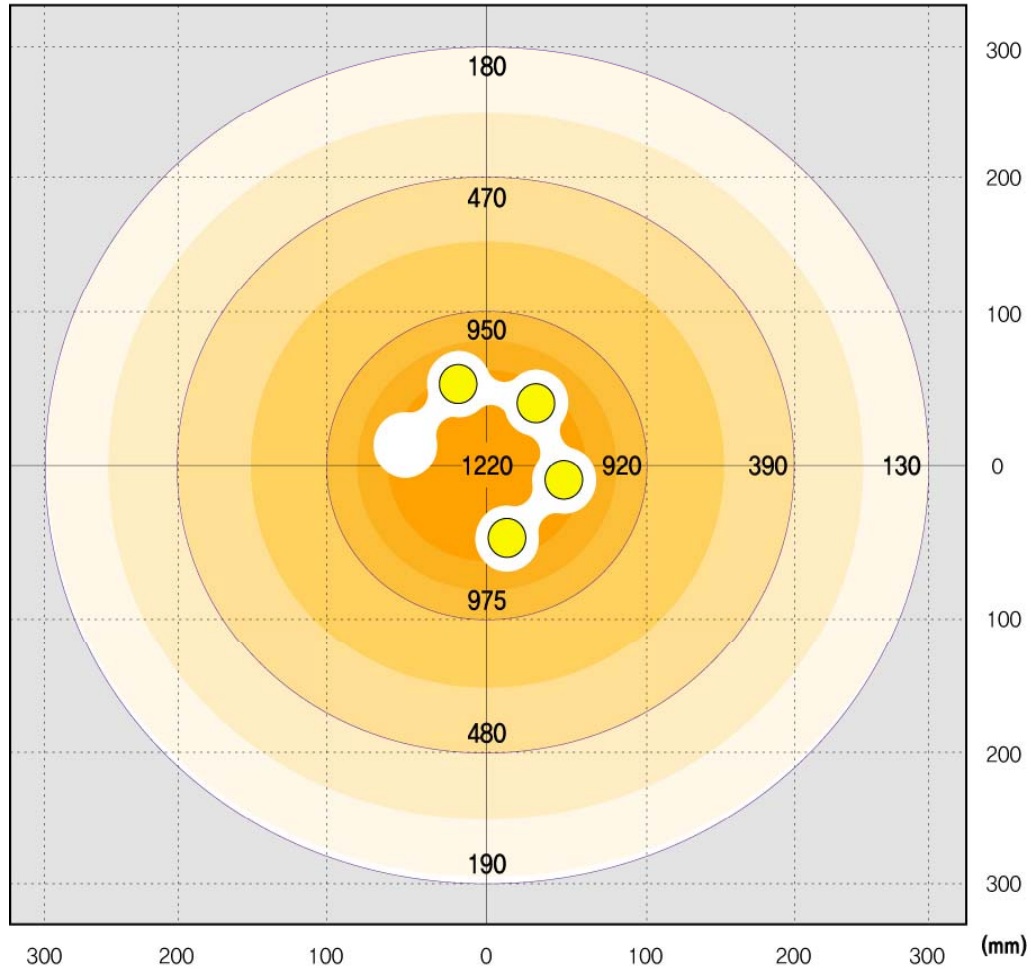


* LTK-1500 Illumination Distribution Chart

측정높이: 35cm

* Inside Digit
: Brightness / Lux

* Outside Digit
: Distance / mm



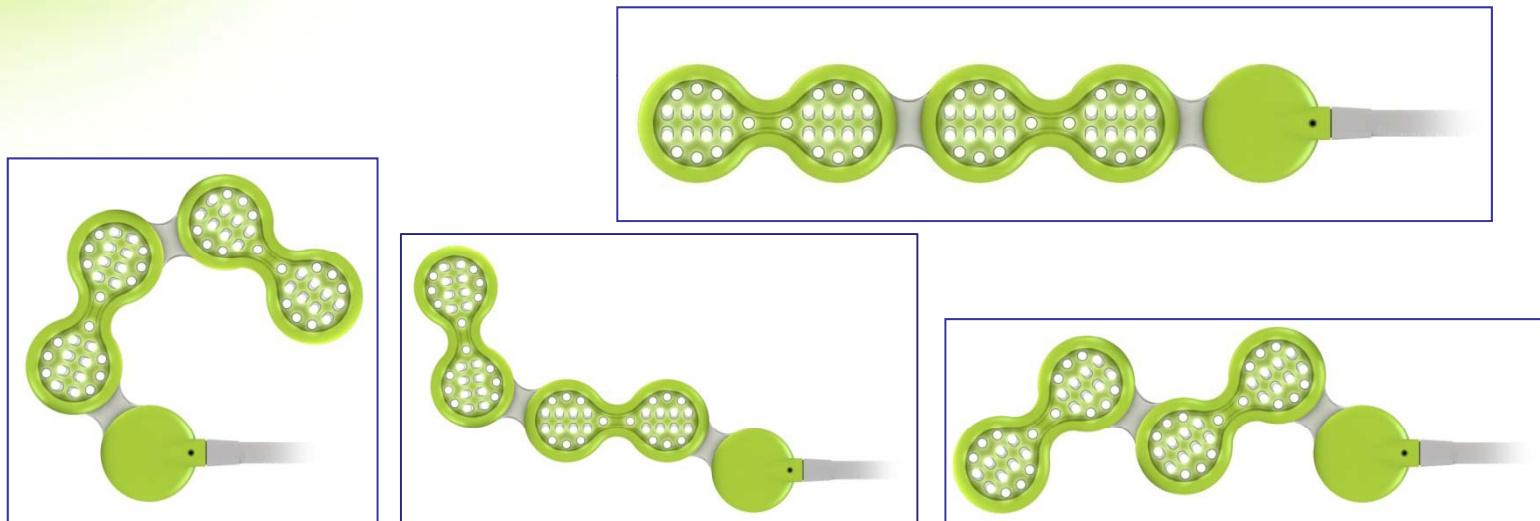
The Excellent Company Brand of Seoul



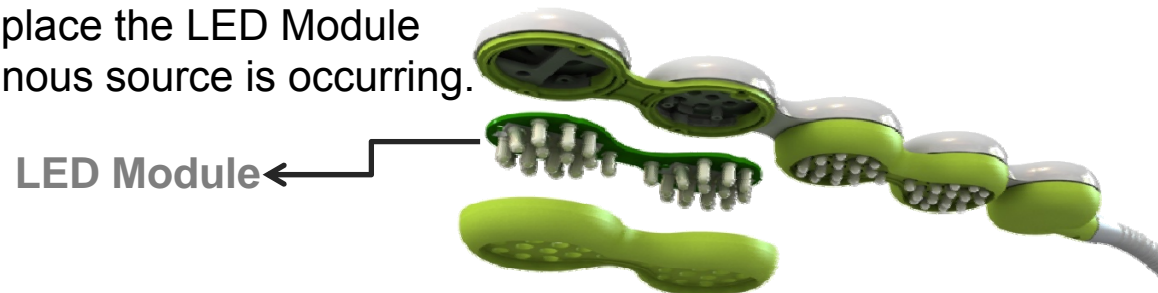
Easy Transformation Bound for LED Module



* Since the luminous source of 4 pieces, not a whole fixed type, gets moved separately, user can shed light the luminous source to the part where he wants.



* Consumer is possible to replace the LED Module easily when A/S of the luminous source is occurring.



The Excellent
Company Brand
of Seoul



Dimming Function & Touch Sensor



- * It adopted a DIMMING function which is available to control 3 stage brightness(Off-1-2-3) so that can adjust against the using environment of the user then reduce a fatigue of the eyes.
- * As the On – Off Touch Sensor was attached inside the product, the product surface was cleanly finished In design aspect.



Touch Button



Brightness 1,2,3



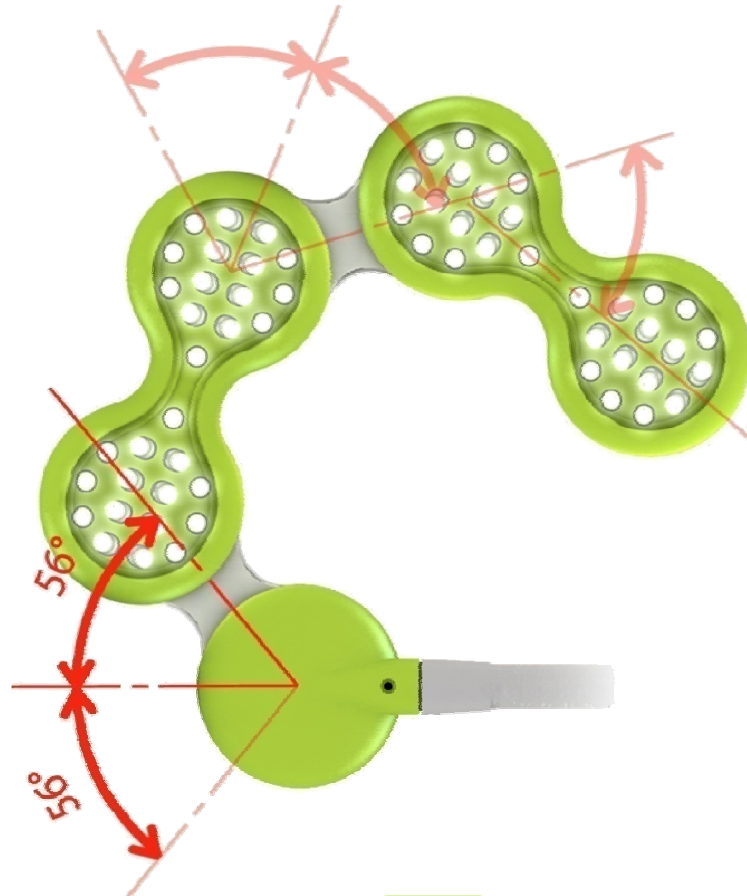
The Excellent
Company Brand
of Seoul



Flexible Spring Tube

Flexible
LED desk lamp

* Use of the Flexible Spring Tube helped to move up & down, left & right easily so that use can control the height, angle etc freely meeting the user's environment.



The Excellent
Company Brand
of Seoul



Green
Seal of
Excellence
kotra



Fresh Life Partner

Color - Running Color



White and Green



Black



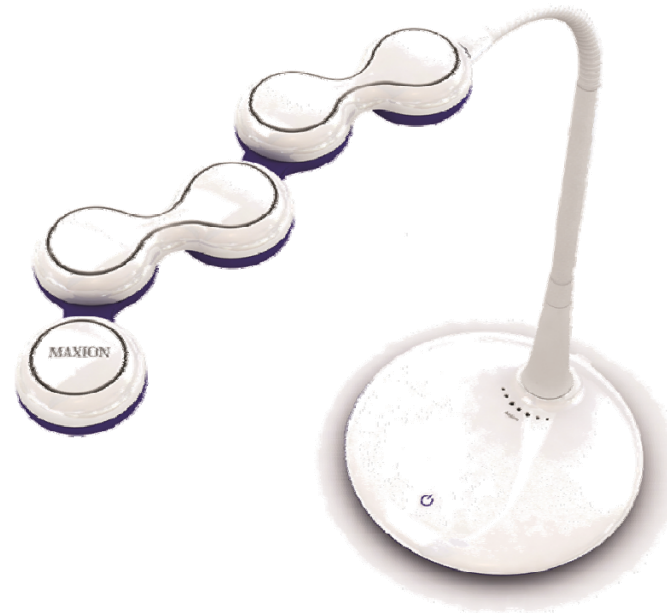
The Excellent
Company Brand
of Seoul



Color - OEM color



White and Pink

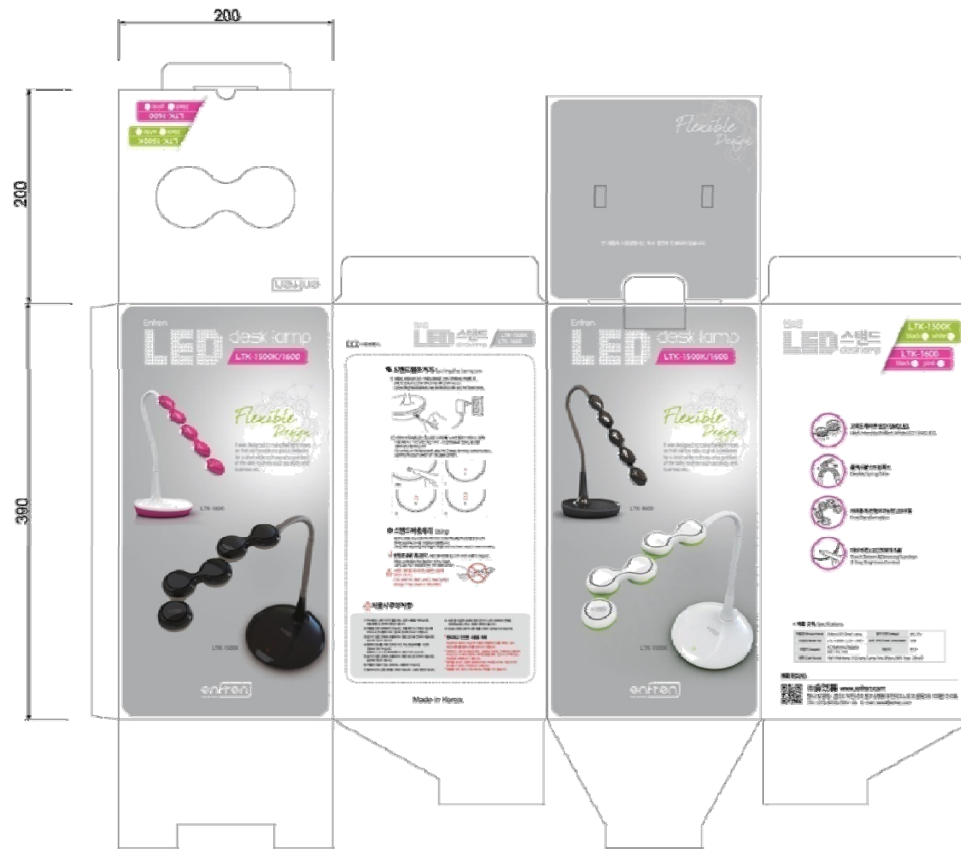


White and Blue

Packing Details-2



INNER BOX 200*200*390mm / 1.5 Kg



The Excellent
Company Brand
of Seoul



Packing Details-1



CARTON BOX 416*414*422mm / 7 Kg
(4 units for each carton)



RoHS CE Certification

Flexible
LED desk lamp

ZERTIFIKAT ◆ CERTIFICATE ◆ 証明書 ◆ CERTIFICADO ◆ CERTIFICAT



Product Service

EC-Attestation of Compliance

No. E8N 09 06 70812 001

Holder of Certificate: ENFREN Co., Ltd.
#103-1210, Bucheon Techno Park,
Saengyeong 3th, 35-1, Saengyeong-Dong,
Gyeongju,
Bucheon City, Gyeonggi Do 421-742
REPUBLIC OF KOREA

Name of Object: Nightstands
Electric Stand for LED

Model(s): LTK-1500

Description of Object:

Rated input voltage:	100-240 V.a.c
Rated frequency:	50/60 Hz
Rated input power:	6 W

Tested according to: EN 55016:2008
EN 61047A1:2000
EN 61000-3-2:2006
LN 61000-3-3A2:2005

This EC-Attestation of Compliance is issued according to the Directive 2004/108/EC relating to electromagnetic compatibility on a voluntary basis. It confirms that the listed apparatus complies with all essential requirements of the EMC directive and applies only to the sample and its technical documentation submitted to TÜV SÜD Product Service GmbH for testing and certification. See also notes overleaf.

Test report no.: TK 018004




Date: 2006-06-22

CE After preparation of the necessary technical documentation as well as the conformity declaration on the required CE marking can be affixed on the product. Other relevant directives have to be observed.

Page 1 of 1

TÜV SÜD Product Service GmbH - Zertifizierstelle - Ridlerstrasse 65 - 80339 München - Germany TUV®

Declaration of EU RoHS Compliance


The EU Directives covered by this Declaration:
2002/95/EC on the restriction of the use of certain hazardous substances in electrical and electronic equipment

Product Name: LED Desk Lamp
Model Number(s): LTK-1500

Supplementary Information
The basis on which Conformity is being Declared and the Products Remains compliant with the requirements of RoHS Directive 2002/95/EC:

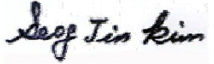
RoHS:

- According to RoHS Directive, a maximum concentration value up to 0.1% by weight of homogeneous materials of selected and restricted substances for lead(Pb), mercury(Hg), hexavalent chromium(Cr+VI), polychlorinated biphenyls(PCB) and polycyclic aromatic hydrocarbon(PAH), and up to 0.1% by weight in specific materials for cadmium(Cd) shall be observed.
- The above products have been inspected since product inception. No changes have been made in process or materials. All products sold under the above P/N numbers, currently and in future, are and will be fully compliant with EU Directive 2002/95/EC.



enfren
Fresh Life Partner

ENFREN Co., Ltd.
103-1210, Bucheon Techno Park, Saengyeong3A,
35-1 Saengyeong-Dong, Gyeongju-Gu, Bucheon-City
Gyeonggi-Do, Korea
Tel. +82-70-8255-7051
Fax. +82-32-624-2259
<http://www.enfren.com>



Sang Jin Kim
CEO



The Excellent
Company Brand
of Seoul



Specification



Item	Specification
Light Source	High Brilliant white LED (15pcs LED for each Module – Total 60 pcs LED) * The Kelvin of LED can be changed on buyers' request.
Brightness / Angle	6,000 mcd (1,500 Lux /35cm from the LED Bulb) / 154 °
Control Brightness	Dimming Controller [0FF 0.3W – Level 1 1.7W- Level 2 2.8W – Level3 4.5W]
The source of electric power	DC 12V(AC-DC Switching Adaptor [100V~240V], 1A)
Electric Consumption	Max 5W
Product Size & Weight	190*190*390 mm / 1.21 kg
Packing Quantity	20'FT DRY : 1,500 pcs / 40' FT DRY : 3,100 pcs
Package	LED Desk Lamp, User Manual, AC Adaptor (1.7m)

Enfren Introduction



- Company's name: **Enfren Co., Ltd.**
- Established: January 24, 2003
- CEO: Kim Seog Jin
- Address of Head office:
103-1210, Bucheon Techno Park Ssangyong III, 36-1
Samjeong-Dong, Ojeong-Gu, Bucheon-Si, Gyeonggi-Do
- Tel: (+82-70)8255-7051 / Fax: (+82-32) 624-2259
- <http://www.enfren.com>

- Main Products : **LED Desk Lamp, LED Magnifier, LED Therapy Device**

- Authorized Certificate

Obtained technical venture certification, ISO9001:2000, Technology Innovation type Small and Medium Business (INNO-BIZ), Business becoming an Export Enterprise, **KOTRA Seal of Excellence – Green, The Excellent Company Brand of Seoul, The Best Trademark Award 2008.**

- Patent & Rights

- ▶ Utility model registration & Registered with design etc: 10
- ▶ Trade mark registration : 1





The Excellent Company Brand of Seoul

- * March 1, 2008 – The Excellent Company Brand of Seoul “Hi Seoul Brand Team”
- * The companies meet the highest standards of business, and demonstrate outstanding performance in the following 3 categories become a Hi Seoul Brand Team Member among companies in Seoul.
- * Awarded from SEOUL / SBA (Seoul Business Agency)



**The Excellent Company
Brand of Seoul**

- **ADVANCED TECHNOLOGY**
- **HIGH QUALITY**
- **FINANCIAL SOUNDNESS**



**The Excellent
Company Brand
of Seoul**

THE EXCELLENT COMPANY BRAND OF SEOUL

<http://hiseoulbrand.sba.kr/kor/default.asp>



**The Excellent
Company Brand
of Seoul**





Awarded a Mark You Can Trust

- * Proudly awarded the KOTRA **Seal of Excellence – Green** on May 4, 2010.
- * The Seal is given to the companies meet the highest standards of business, and demonstrate outstanding performance in the following 4 categories:



Serial No. G2010-005-01

- **ADVANCED TECHNOLOGY**
- **HIGH QUALITY**
- **FINANCIAL SOUNDNESS**
- **ECO-FRIENDLYNESS**



KOTRA, the Korea Trade-Investment Promotion Agency is a **Korean government organization** committed to promoting international trade and investment since its foundation in 1962.



The Excellent
Company Brand
of Seoul

