

Enfren EL-250

LED Desk Lamp

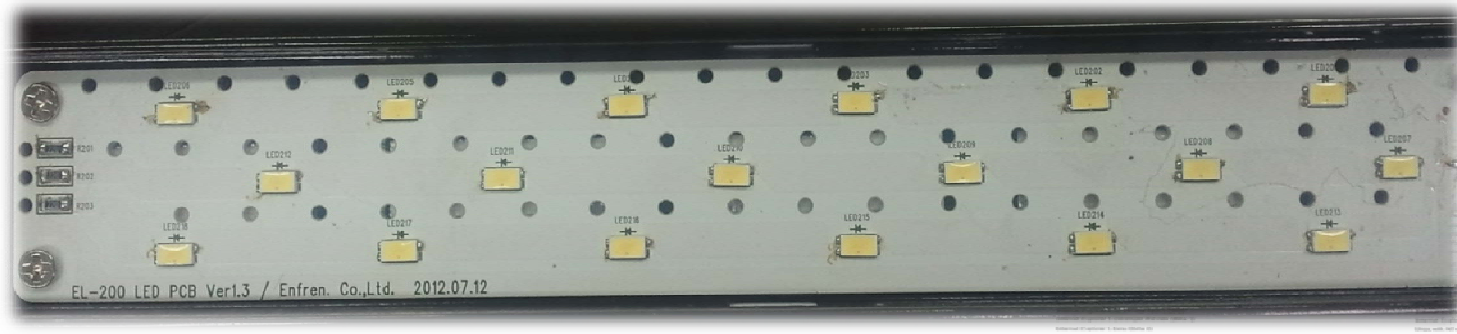


EL-100 LED desk lamp Feature & Advantages



High luminance SMD LED mounted

- * **Patent free** Korean-made high luminance SMD Type LED Mounted
 - **18 pieces** of the 0.5W class from Seoul Semiconductor are in use
 - Brighter (maximum **1,620 lux**), wider irradiating angle(**maxim 180 °**) secured
 - Stable LED quality through excellent heatproof structure



Metal PCB is in use

*Aluminum PCB and exclusive Heat Sink are in use

- Stable LED quality and reliability secured upon the use for long time
- * Heatproof function enhanced by the air circulating type structure design for the head part



<Aluminum PCB + heatsink + ventilating structure design >



The Excellent
Company Brand
of Seoul



Compact & Slim Design 1

- * The most suitable design for the use environment on a small desk:
 - **Slim & Compact** structure : Occupying area on the desk minimized
 - .Product size : 375(height) x 195(diameters)mm
 - .when folded : 420 x 195 x 80 mm
 - By the multi-articular design **the angle and direction adjustment** is very handy



<It is possible to adjust up & down , right & left>



<when folded completely>



The Excellent
Company Brand
of Seoul



Compact & Slim Design 2

- * Strong structure against vibration :
 - It was solidly fixed by an articular part adjustment screw



〈Head adjustment screw〉



〈Central axis adjustment screw〉

Convenient function enhanced

- * Protective cover against dazzle mounted
 - Exclusive LED 'LUMIPLUS' of LG Chem is in use



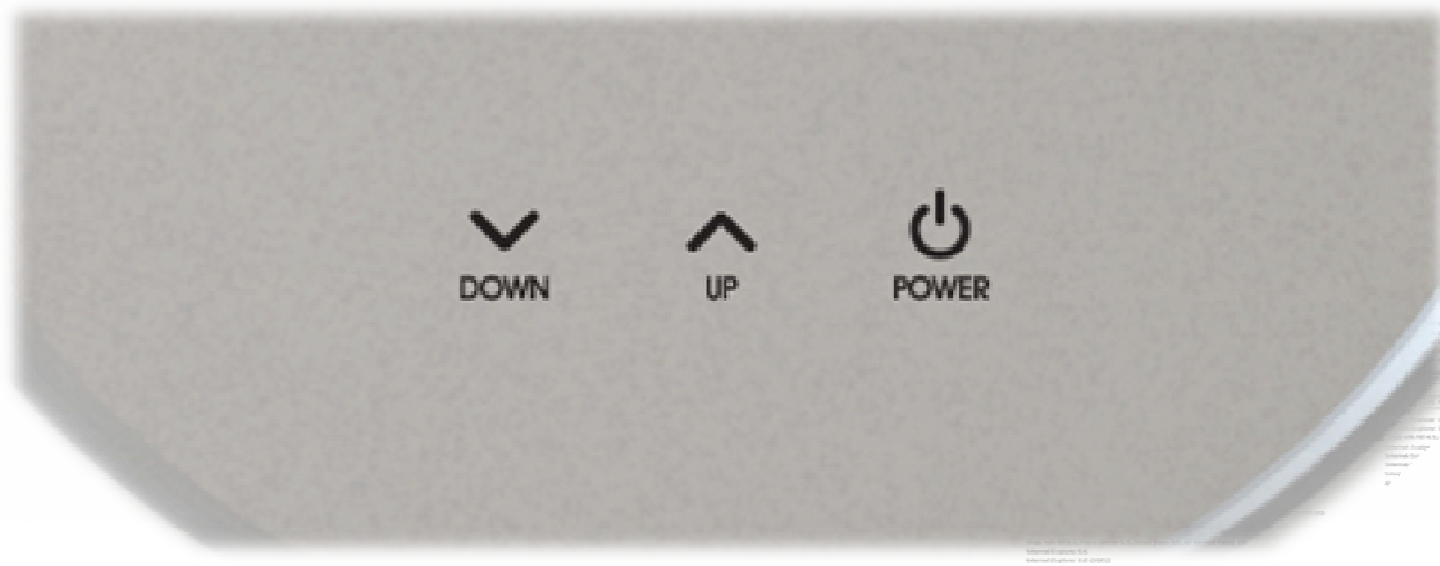
- * Free Voltage adapter in use
 - 100~240V Free Voltage
 - PSE-Certified adapter is in use



High Sensitivity touch circuit built -in

Built-in high sensitivity touch circuit by exclusive MICOM

- It is possible to adjust minute brightness by the respective UP/DOWN 7 stages
- **PWM** type high sensitivity touch sensor circuit applied
- Power supply switch separately applied : **One touch on/off Possible**



Item	Specification
Model	EL-250 LED desk lamp
Brightness	On the basis of 35cm from the maximum 1,620 Lux/luminous source (18 pieces of the 0.5W SMD LED from Seoul Semiconductor are in use)
Rate Voltage	In-put : AC 100~240V, Out-put : DC 24V 1.5A
Electric Power Consumption	Max 8W
Product composition	LED desk lamp, adapter, manual
Product size	375(Height) x 195(Diameters)mm
Packing Size	420 x 211 x 88 mm

CE Certification

CE

EC Declaration of Conformity
According to EMC Directive 2004/108/EC

Manufacturer's Name: Enfren Co., Ltd.
Manufacturer's Address: 107-1200, Haeinsa (Seosin Park) Sangyeong 3, 36-1, Sangyeong-Dong, Gyeongju-City, Gyeongju-410, Korea

Declare that the product:

Product Name: LED Desk Lamp
Item Model: EL-100
Variant Model: EL-200, S-200

To which this declaration refers is in conformity with the following standard(s) or other normative document(s):

EN55025:2006+ A1: 2007+A2:2010 **Limits and methods of measurement of radio disturbance characteristics of electrical lighting and similar equipment**

EN61041:2009 **Equipment for General Lighting Purposes - EMC Immunity Requirements**

EN61006-3-2:2005 IEC 61006-3-2:2005 **Electromagnetic compatibility (EMC) - Part 3-2: Limits - Limits for harmonics and emission (equipment impedance $\leq 16 \Omega$, per phase)**

EN61006-3-3:2008 **Electromagnetic compatibility (EMC) - Part 3-3: Limits - Limitation of voltage changes, voltage fluctuations and flicker in public low-voltage supply systems, for equipment with rated current $\leq 16 \text{ A}$, per and not subject to conditional connection**

Following the provisions of Directive(s):

2004/108/EC Council Directive on the approximation of laws of the Member States relating to electromagnetic compatibility (CEI 1.1042, 1.099) amended by Directives 92/31/EEC (CEI 1.126 12.5.92) and 93/68/EEC (CEI 1.220-90.5.93)

Korea, December 19, 2012 / *Seung-Jin Shim* / seungjin@enfren.com
(Place and date of issue/Name and signature of responsible making of authorized person)

European Contact (for regulatory logic only)

CE

EC Declaration of Conformity
According to Low Voltage Directive 2006/95/EC

Applicant's Name: Enfren Co., Ltd.
Applicant's Address: 107-1200, Haeinsa (Seosin Park) Sangyeong 3, 36-1, Sangyeong-Dong, Gyeongju-City, Gyeongju-410, Korea

Manufacturer Name: Same as applicant
Manufacturer Address: Same as applicant

Declare that the product:

Product Name: LED Desk Lamp
Item Model: EL-100
Variant Model: EL-200, S-200

To which this declaration refers is in conformity with the following standard(s) or other normative document(s):

Applicable Regulation: EN60950-2-4:2007 used in conjunction with EN60950-1:2004+A1:2006
— SAFETY —
Luminaires - Part 2: Particular requirements - Section 4: Details general purpose luminaires

Also, the following device was connected for operating:

Type	Model	Applied Standard	Certificate Holder
LED Desk Lamp	EL-100	EN 60950-2-4	Enfren Co., Ltd.

I, the undersigned, hereby declare that the equipment specified above conforms to the above standard(s) or directed to in the attached test report

Point of contact
Tel: 82-54-824-2004, 8255-8255824-2000, seungjin@enfren.com
(Name, telephone and E-mail)

Republic of Korea, December 19, 2012 / *Seung-Jin Shim* / _____
(Office, date of issue) (Title and signature)



The Excellent Company Brand of Seoul



Manual(FRONT)



Compensation for customer's damage

1. If any defect occurs while using the product, customer can get free after-sales service for one year from the date of purchase.
2. For the following defects, customer must get after-sales service with a charge even within the warranty period.
 - Any defect caused by user's mistake or negligent handling.
 - Any defect caused by natural disasters (fire, salt damage, gas, earthquake, storm and flood damage, falling of a thunderbolt)
 - Any defect caused by other people's repair or alteration other than our repairmen.
 - Any defect caused by non-fulfillment of cautions specified in the user manual.
3. Be sure to present the warranty when repair is needed.
4. Keep it carefully as the warranty is not reissued.
5. Parts for repair of this product shall be kept in stock for 3 years.

*Make sure to fill in the blanks to get free after-sales service for one year after purchase.

Product Name	Enfren LED Desk Lamp			Warranty period
Model No.	EL-250			One year
Date of Purchase	year	month	day	
Warranty Period	year	month	day	until

Enfren LED DESK LAMP EL-250

User Manual



Make sure to read this user manual carefully before using the product.
After reading the user manual, keep it in a place where user can see at any time.
There includes the warranty at the back of the user manual.

Contact Us



Enfren Co., Ltd. www.enfren.com
103-1210, Bucheon Techno Park Soangyong 3 Cha Apt, 397, Seokcheon-ro, Ojeong-gu,
Bucheon-si, Gyeonggi-do, Korea
Tel: 82-70-8255-7851 E-mail: seoul@enfren.com



The Excellent
Company Brand
of Seoul



Manual (BACK)

⚠ Cautions

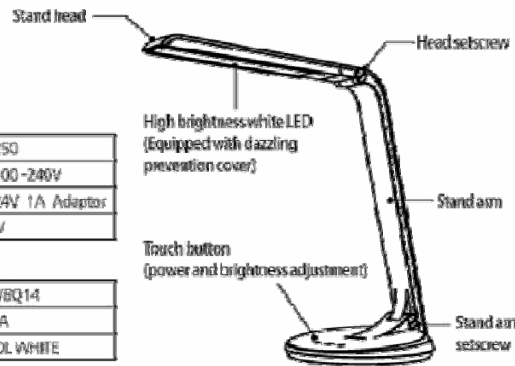
- * Avoid direct sunlight or do not place near a heater. It may cause change in shape and change in color of the product.
- * Do not disassemble the product discretionally. We are not responsible for discretionary disassembly. Throw it away in the designated place when the product is disposed of to prevent it from being misused.
- * Do not use in a humid place or touch with the wet hands. (It may cause an electric shock.)
- * Wipe with a dry towel or towel with a detergent when cleaning the body.
Never wipe with chemicals such as benzene or thinner, and so on.
- * Do not use in a place where intense vibration occurs.
- * Do not drop or make a strong impact. It may cause trouble.
- * Shut off power immediately when smoke occurs with strange smell while in use. (It may cause fire.)
- * Do not forcibly pull the power cord.
- * Do not use them when the power cord is scratched or the metal part of the power plug becomes loose.
- * Get after-sales service from our service center when the product doesn't work properly due to the abnormality of the power cord.
- * Do not touch the head with the hand directly as it may be hot after using the lamp for many long hours.

Specifications /Name of each part

Model No.	EC-250
Electric power source	AC100-240V
	ERC24V 1A Adaptor
Power consumption	16W

* LED CHIP

Model No.	SIWBQ14
Number of use	18EA
Color	COOL WHITE



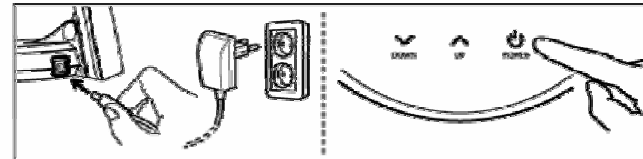
Features

- ❶ Eco-friendly, super power-saving, and long-life LED stand good for the eyes without blinking! (Maximum brightness 1,620LUZ).
- ❷ Equipped with high-sensitivity touch sensor switch using the microm method!
- ❸ Product structure and design suitable for small space!
- ❹ Equipped with dazzling prevention cover. Use of the exclusive LED "LUMIPUS" of LG Chem!

How to Use

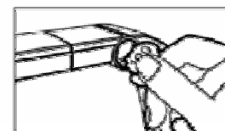
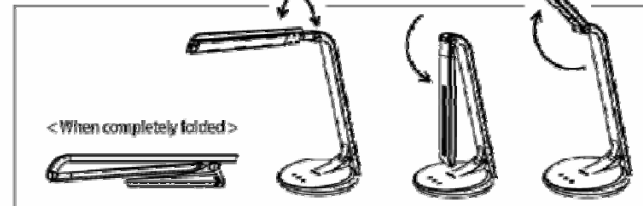
❶ Turn-on of stand lamp

Connect the power adaptor to the power terminal at the back of the product, and then plug in. Press the touch switch on the stand supporting part to turn on the lamp and press again to turn off the lamp. Press the UP/DOWN button to adjust brightness. Total 14-stage brightness control is available (Dimming function: up: 7 stages, down: 7 stages)



❷ Adjustment of stand angle

Stand head and central axis are freely adjustable, up and down, right and left.



* Tighten it with a coin when in use when the stand head becomes loose.

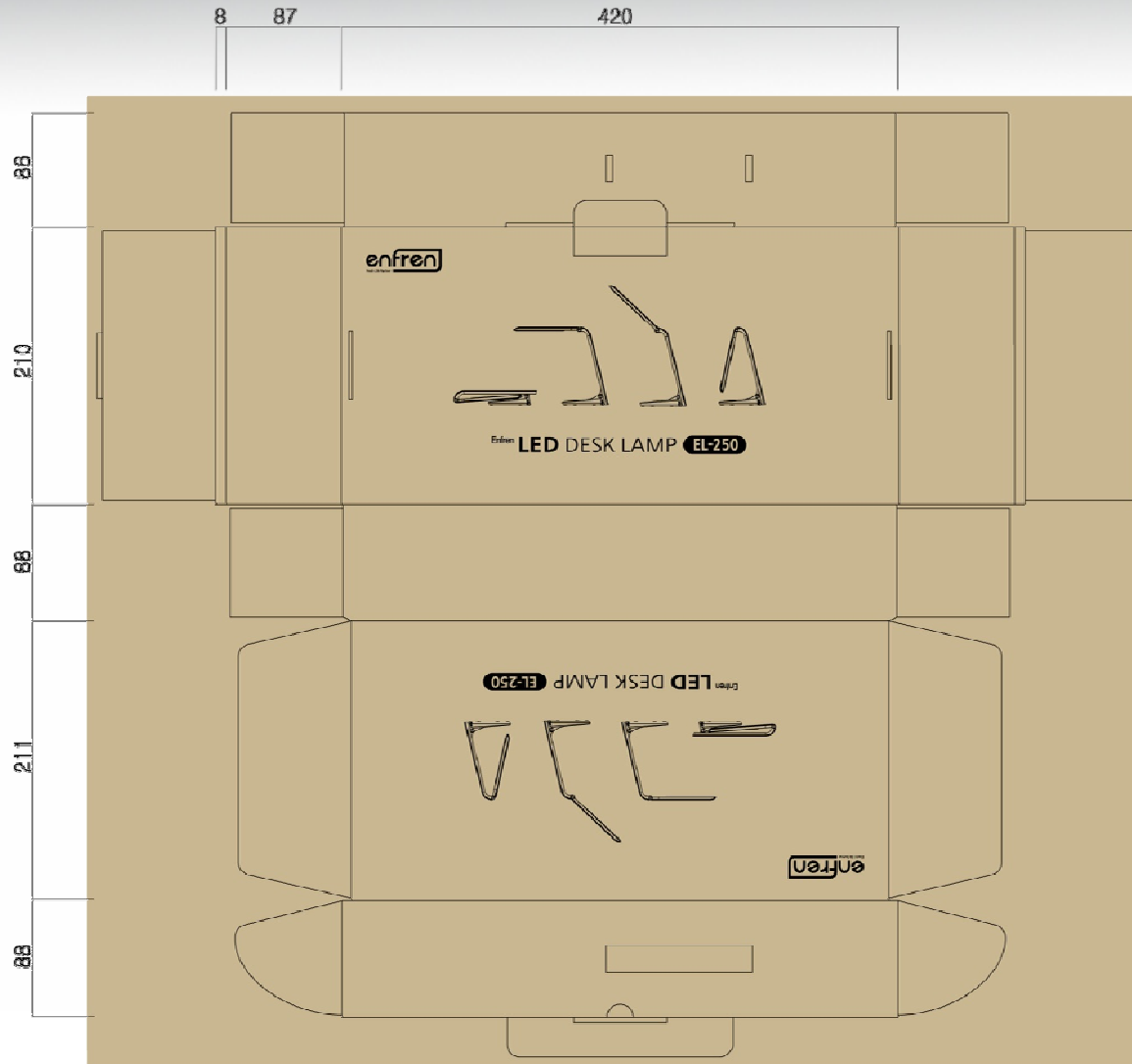


The Excellent Company Brand of Seoul



Gift Box

420x210x88(mm)



Carton Box – 6pcs for 1 carton

434×284×450(mm)

